

## Contents

Wiring Diagrams 2

Installation Diagrams 3

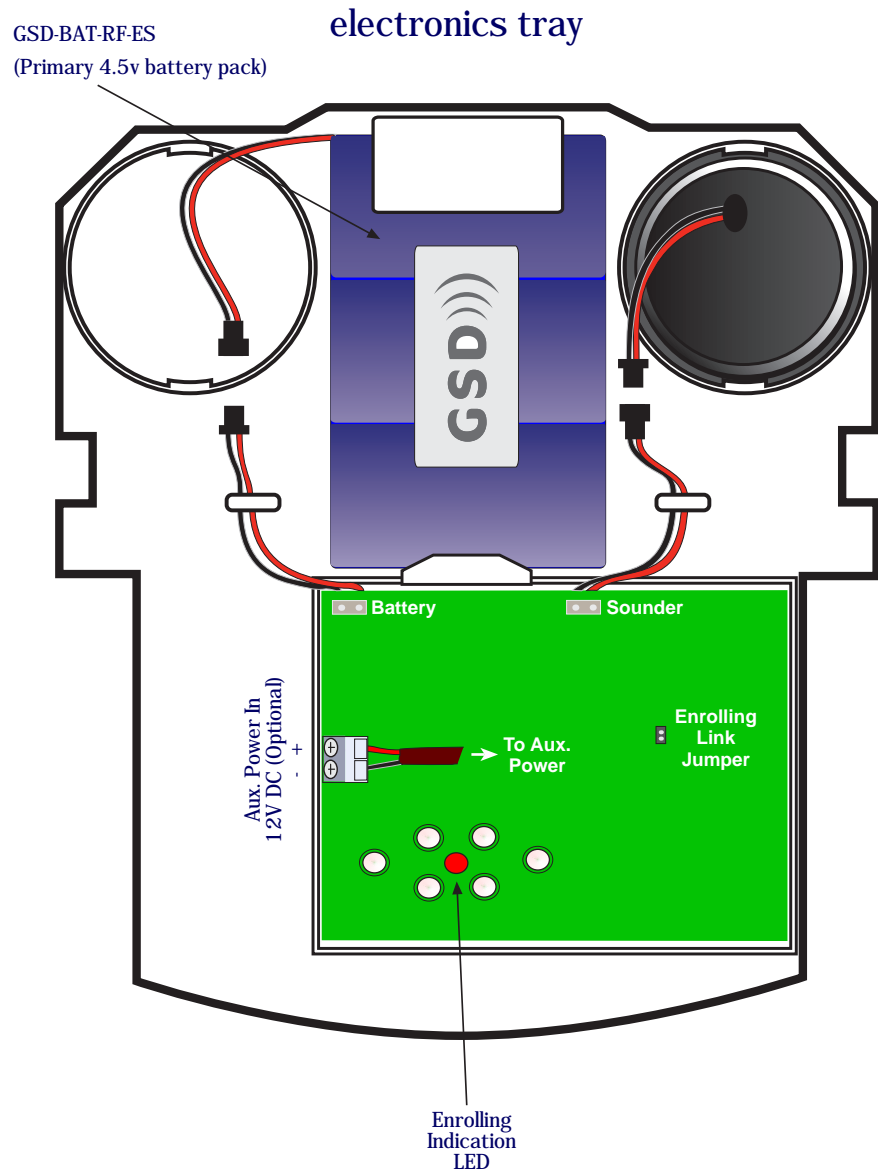
Operation Instructions 5

Technical Specification 7

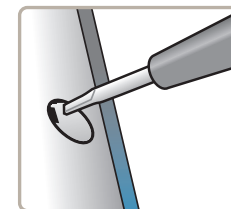
**GSD)))** *i70*

Grade 2 Intrusion Wireless External Siren

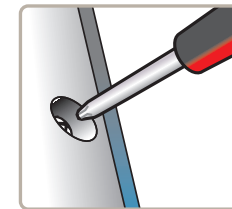
## External Siren connections



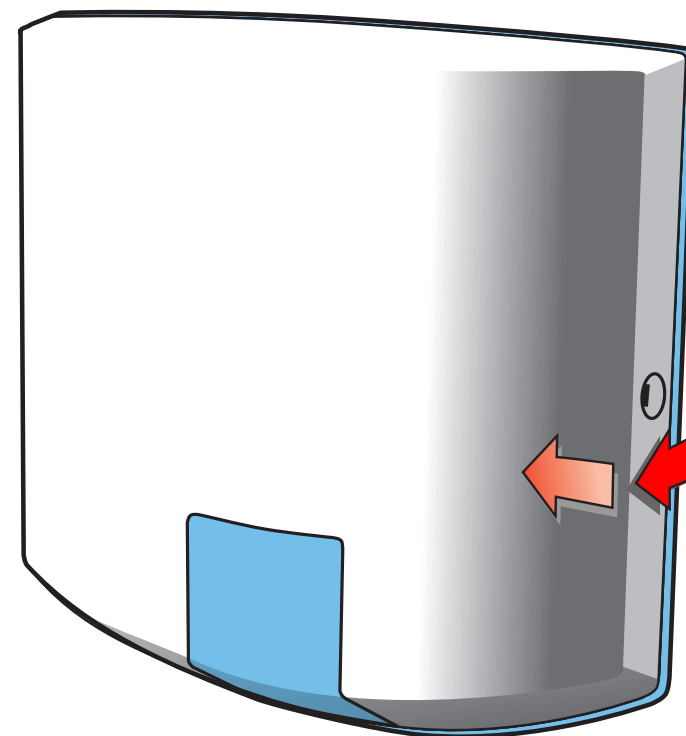
## External Siren opening



remove screw cap



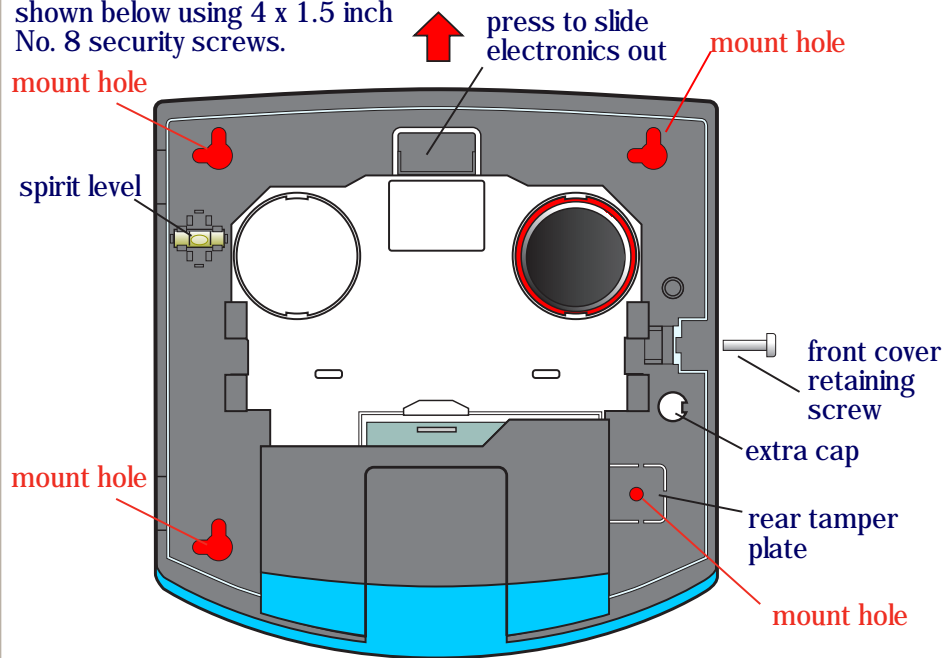
remove retaining screw



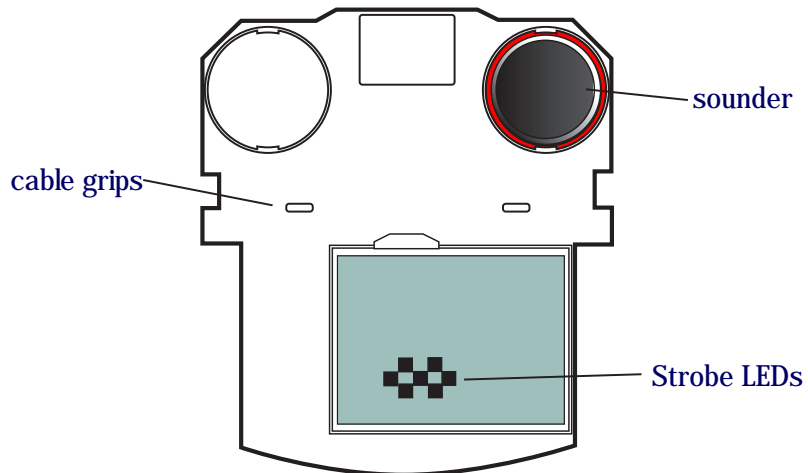
to remove cover  
pull forward on  
the right and  
slide the cover  
left

## External Siren mounting

mount the siren using mount hole shown below using 4 x 1.5 inch No. 8 security screws.



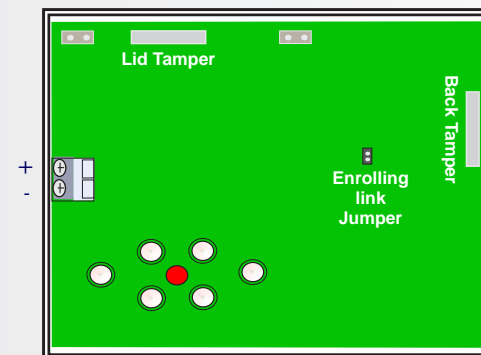
## electronics tray



## External Siren enrolling

1. Using the keypad on the GSDi-70 Panel start the enrol process: In the installer menu navigate to Sirens - Add Siren Wizard - Enrol RF Siren and press OK.
2. Remove the Enrolling Link Jumper from the Wireless Siren PCB.
3. Connect the battery to the Wireless Siren.
4. Replace the Enrolling Link Jumper on the Wireless Siren PCB.
5. Remove the Enrolling Link Jumper immediately after the Red LED ( Enrolling indication LED ) turns ON. It will take 5 seconds to switch ON.
6. The Siren will then enrol on the panel after a few seconds. The panel will indicate that the Siren has enrolled with a message External siren enrolled on the display.
7. Follow the on screen instructions to test Signal Strength, Strobe Output, Siren output and the Tamperers.
8. Follow the on screen instruction to rename the Siren and assign it to a specific area if desired.

Note: There are 2 magnetic tamperers ( Lid & Back Tamperers ) on the Wireless Siren, ensure the electronic tray is slotted in correctly to avoid any false tamperers caused by misalignment.



## Configure Sirens ( optional )

Changing individual siren options:

1. Select the Sirens menu: in the installer menu navigate to Sirens - < desired Siren > and press OK.
2. Change the Siren's Name, Area and LED Heartbeat as required:

Name ( assign a name to the siren )

Area ( assign the siren to an area )

Related zone ( view the zone no. the siren is installed on)

Flash heartbeat ( turn heartbeat LED on/off )

## Testing Sirens

Test sirens: navigate to Sirens - < desired siren > - Device Settings - Device - Test device.

1. Follow the on screen instructions to test RSSI Signal Strength, Siren Outputs ( Strobe Output and Siren Output ) and Tampers.

Note:

- Selecting Strobe Output will toggle the Output on for 20 seconds.
- Selecting Siren Output will toggle the Output on for 10 seconds.

Alternatively the Siren Outputs can be tested from the menu Outputs: navigate to Outputs - Test outputs - < desired siren output >

1. Test the strobe and siren output as above.

## Technical specification

	GSDi-RF-ESB	
Name of manufacturer	Global Security Devices Ltd	
Description of equipment	RF External Siren, 2 Way Communication	
Standards	EN50131-1:2006 EN50131-4:2009 PD6662:2010 BS8243:2010 EN60950:2006	
Security grade	Grade 2	
Environmental class	Class III	
Operating temperature	-25°C to 50°C	
Relative humidity	Up to 75% non-condensing	
Functions	85 - 95% non-condensing for 30 days per year Intrusion siren Enclosure tamper detection Removal from mounting tamper detection Battery voltage monitor	
Options (software configurable)	Enable heartbeat LED's	
Inputs	None	
Signals / Indications	Condition	Signal
	Tamper	Tamper
Dimensions ( w d h )	260mm 65mm 260mm	
Power supply description	Type A	
Power Supply Input	12 DC Volt Auxiliary power (optional)	
Battery	GSD-BAT-RF-ES (Primary 4.5 Volt battery pack)	
Type of acoustic output	Siren tone	
Maximum sound duration time	15 minutes continuous siren-defaulted to 3 min	