



Contents

Operation Instructions 2

Installation Instructions 4

Technical Specification 6

GSD))) *i70*

Grade 2 Intrusion Contact / Universal

Enrolling on a GSDi intrusion system

1. On the system start enrolling: see GSDi installation manual for details.
2. Remove the GSDi Contact/Universal from its mounting plate.
3. Press and hold the tamper switch.
4. Wait about 5 seconds.
5. When the LED on the front lights, release the tamper switch.
 - The sensor flashes the LED to indicate it is searching for the system.
 - When it finds the system the keypad will display a message.
6. Replace the sensor on its mounting plate.
7. Secure it with the fixing screw.

Configuring the Contact/Universal

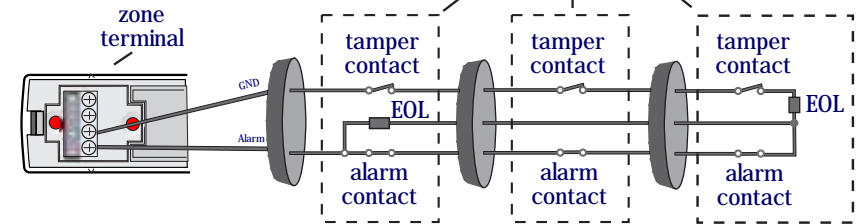
The following settings are available on the Contact/Universal sensor.

- Magnet enable/disable
- Tamper enable/disable
- Universal terminals enable/disable
- End-of-line type: no EOL, single EOL, dual EOL

They can be found in the installer menu at the following location Device / Zones - <desired zone> - Device - Device settings.

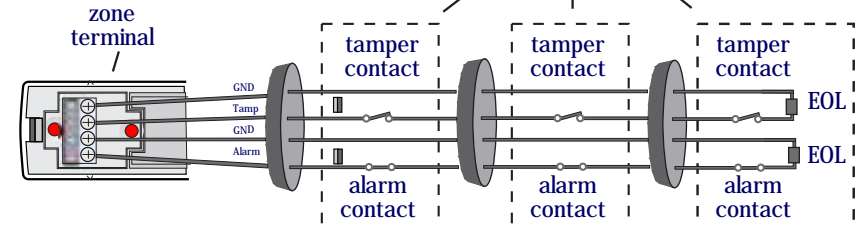
EOL type - dual end-of-line

Optional wiring using Universal Terminals
Wire sensors to the zone terminals according to the wiring diagram.
- Single loop wiring



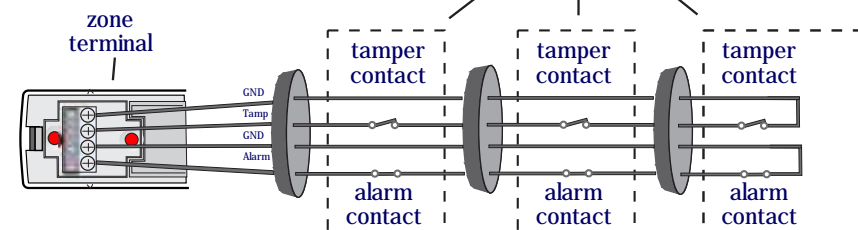
EOL type - single end-of-line

Optional wiring using Universal Terminals
Wire sensors to the zone terminals according to the wiring diagram.
- Dual loop wiring

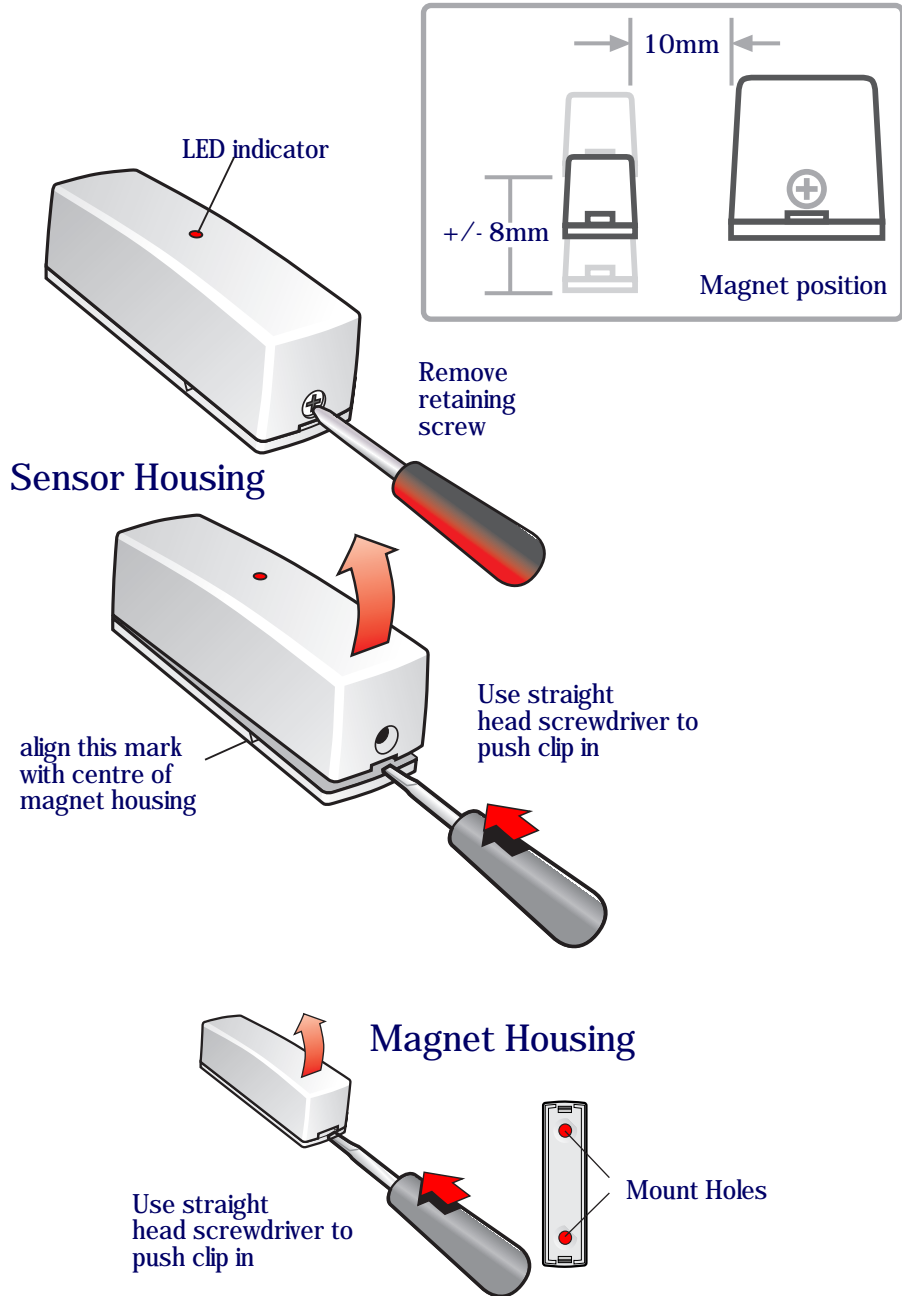


EOL type - no end-of-line

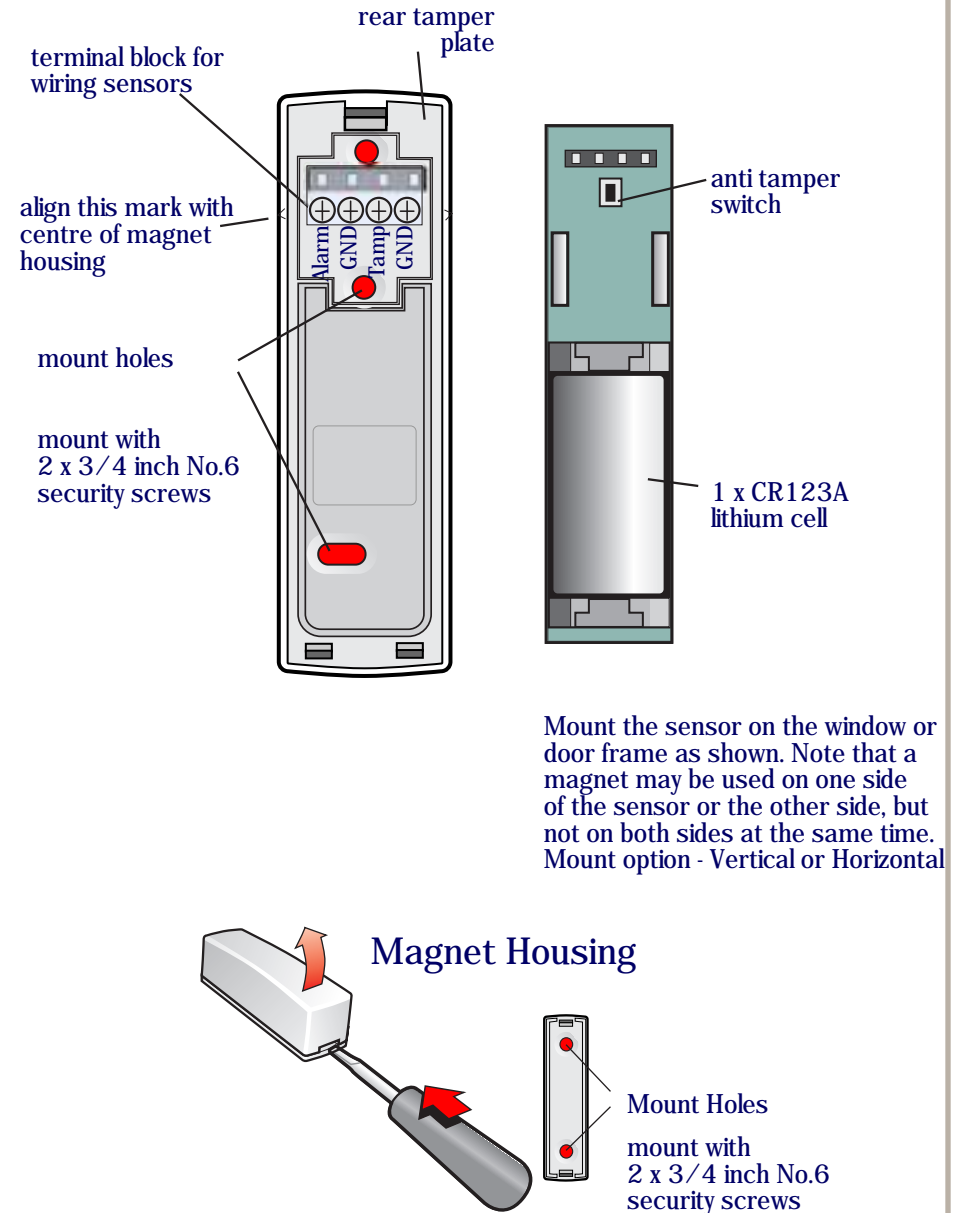
Optional wiring using Universal Terminals
Wire sensors to the zone terminals according to the wiring diagram.
- Dual loop wiring



Contact / Universal opening



Contact / Universal mounting



Mount the sensor on the window or door frame as shown. Note that a magnet may be used on one side of the sensor or the other side, but not on both sides at the same time. Mount option - Vertical or Horizontal

Technical specification

	GSDi-RF-CU	
Name of manufacturer	Global Security Devices Ltd	
Description of equipment	Door / Window Magnetic Contact + Universal Sensor	
Standards	EN50131-1:2006 EN50131-2-6:2008 EN50131-6:2008 PD6662:2010 EN60950:2006	
Security grade	Grade 2	
Environmental class	Class II	
Operating temperature	-10°C to 40°C	
Relative humidity	Up to 75% non-condensing	
Functions	Magnetic contact Wired zone to 3rd party detector Enclosure tamper detection Removal from mounting tamper detection Battery voltage monitor	
Options (software configurable)	Disable magnetic contact Disable wired zone Wired zone EOL type Disable tamper	
Inputs	None	
Signals / Indications	Condition	Signal
	Intrusion Tamper Low battery fault Total supply loss	Intrusion Tamper Low battery fault Loss of communication
Dimensions (w d h)	27mm 29mm 90mm	

	GSDi-RF-CU
Magnet position	Value given for $-8 \text{ mm} \leq B \leq 8 \text{ mm}$ Non-ferromagnetic surface Zone closed: A 10 mm Zone open: A 20 mm Not suitable for ferromagnetic surfaces
Power supply description	Type C
Battery	CR123A lithium cell. Nominal voltage 3.0V. Low voltage indication below 2.6V. Life typically 3 years*

* Battery life depends on detector usage. In a situation where the zone state changes frequently the battery life may be reduced.