

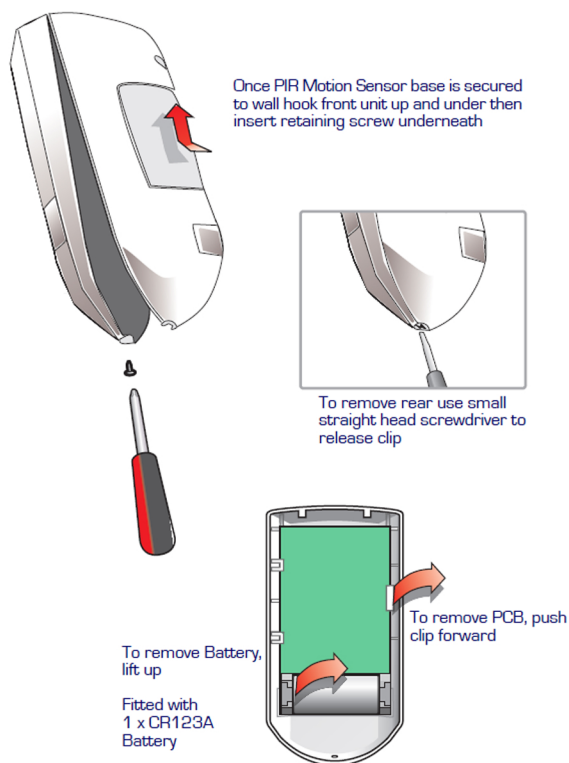
# GSD))) *i70*

## GSDi Grade 2 Wireless Motion Detector (GSDi-RF-PIR)

### Main Features:

- Grade 2 Class II Motion Detector
- Secure two-way encrypted wireless network
- 15m Passive Infrared Receiver (PIR)
- Mounting height 2.0m to 2.4m
- Comes with Wide Angle Lens
- Field of view 90 degrees
- Creep protection
- Front and back Tamper
- LED indicator in cover
- Battery life 3 years\*
- Transmits Alarm, Tamper, Low Battery and Supervisory conditions

\*Battery life is based on the typical number of activations and in normal conditions



### Technical Specifications:

- Battery Type: 1 x DL123A 3V 1300mah Lithium
- Indoor Use Only
- Dimensions W. 61mm D. 43mm H. 108mm

*Professional Wireless  
Security Products*