

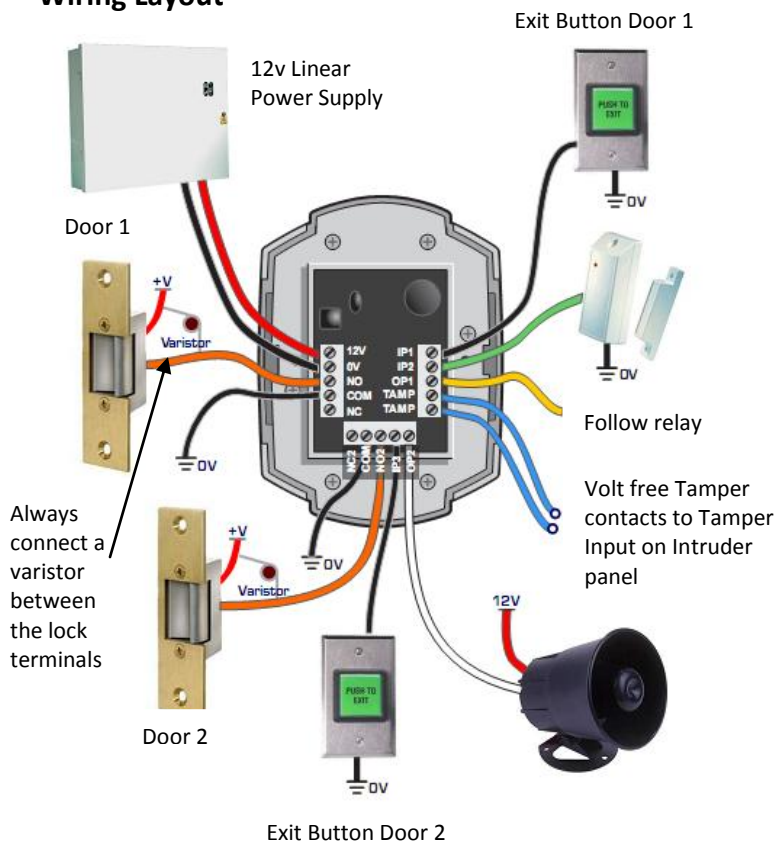
GSD 2 Door Standalone Digital Keypad



Main Features

- 2 Doors
- 50 Users
- Door Monitoring via Door Contact
- Tamper Resistant
- Easy Programming
- Standard, Toggle & Manager Users
- Intruder & Fire Alarm Interface
- Interlock
- 3 Inputs – 1 programmable
- 2 programmable outputs
- Programmable Settings:
 - Number of PIN code Digits
 - Programming Code
 - Relay Active Time (both relays)
 - Door Ajar Time
 - Door Bell Time
 - Silent or Audible Operation
 - Duress PIN Codes
 - Door Toggle Operation
 - Door Forced Alarm
 - Anti-Tail Gate Operation
 - Keypad Backlight
 - Invalid PIN Lockout
 - Inputs/Outputs Options
- Indoor/Outdoor Use - IP 67
- Robust Polycarbonate Housing
- Mounts onto Standard Electrical Patress Box
- Flush mounts using collar supplied
- 2 Year Warranty.

Wiring Layout



Technical Specification

- Supply 12 - 24V AC or DC
- Current consumption 100mA
- Current consumption with load (max) 130mA
- 2 x Relay Contact Rating 5 Amps /240V ac
- Operating Temperature - 20 C to +60 C
- Moisture Resistance IP 67

Dimensions –

- Flush Mount **W.** 87mm **D.** 21mm **H.** 119mm
- Surface Mount **W.** 87mm **D.** 35mm **H.** 119mm